



Air Cushion Technology



AirSpeed™ SMART Quick Start User Manual and Safety Guide

V.4

Safety Guide

Using the AirSpeed™ SMART Air Cushion Machine

PEOPLE

1. All personnel shall receive training and review manual prior to operating equipment.
2. Only authorized personnel may use the equipment. All persons under age 18 will be supervised.
3. Only trained authorized persons will carry out any adjustments, repairs, maintenance or cleaning with the equipment isolated from power supply, no longer in motion and allowed to cool.
4. Keep hands and fingers away from any openings, knife blades, hot surfaces and moving parts of the equipment.
5. Restrict access to authorized personnel. Authorized operators shall know the limitations of equipment and shall only use as intended.
6. Manual handling of Air Cushion equipment and ancillaries shall be in accordance with the operator's manual.

DEVICE

7. Ensure equipment is positioned securely and does not obstruct evacuation routes.
8. Noise emissions for the AirSpeed™ SMART shall not generally exceed 62 db(A).
9. Check prior to use that all guards and safety devices including switches are fully functioning.

ENVIRONMENT

10. Equipment shall be on work equipment inventory for regular inspection, maintenance and testing.
11. All cables shall be routed so as not to be a slip or trip hazard.
12. Keep all film material off the floor to avoid a slip or trip hazard.
13. Avoid all sources of ignition. No smoking.
14. Good Housekeeping standards shall prevail and work area should be kept clear at all times.
15. Adequate lighting shall be provided where natural light is insufficient.

Loading Film



1. Load Roll onto Spindle.

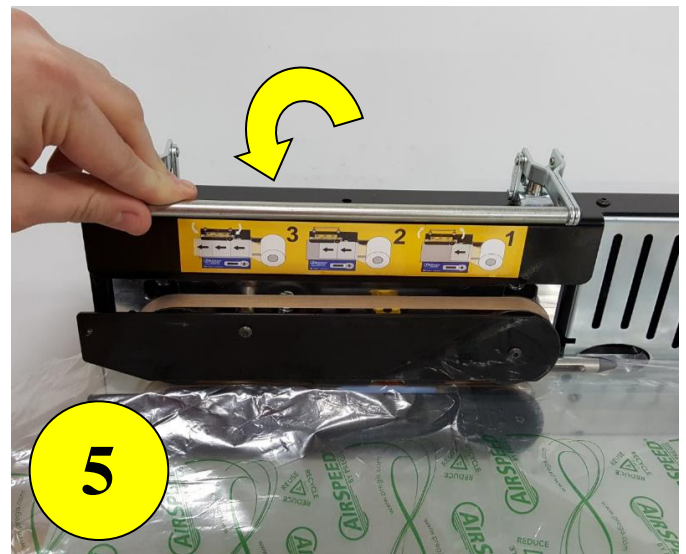
2. Raise Handle.



3. Thread Film Opening onto the Tube.



4. Pull Film Through Seal Area.



5. Lower Handle.

Starting the AirSpeed™ SMART

1



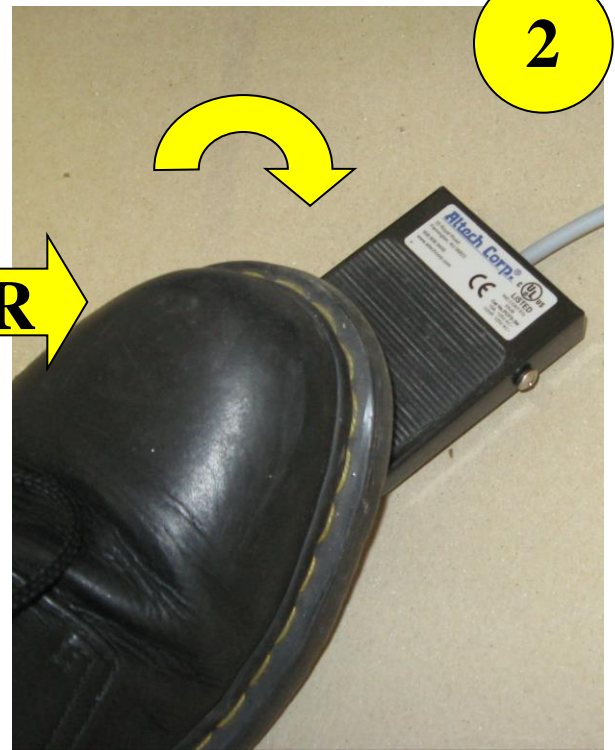
1. Turn power On.

2



2. Press Start Button.

2



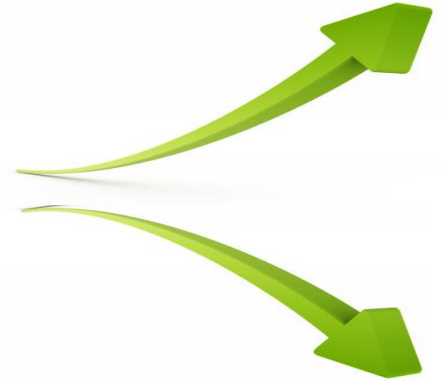
2. Press Foot Switch.

Adjusting AirSpeed™ SMART

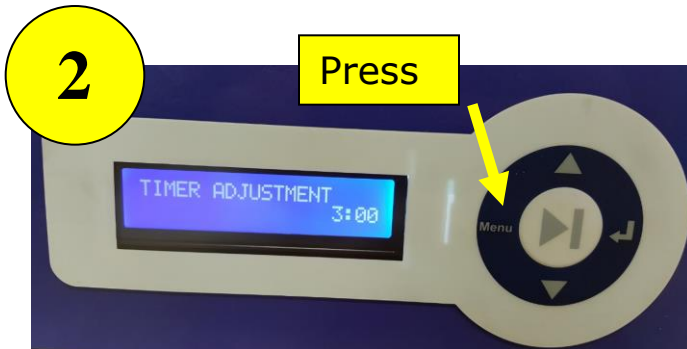
Adjust Run Time



1. Press Increase or Decrease.



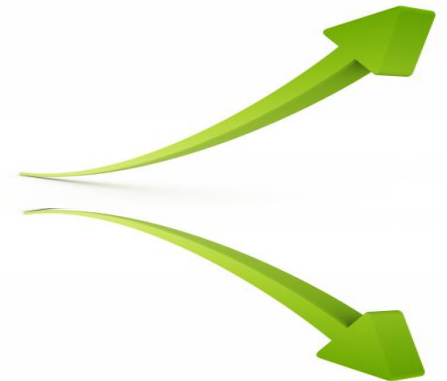
Adjust Air Flow



1. Press Menu Button.

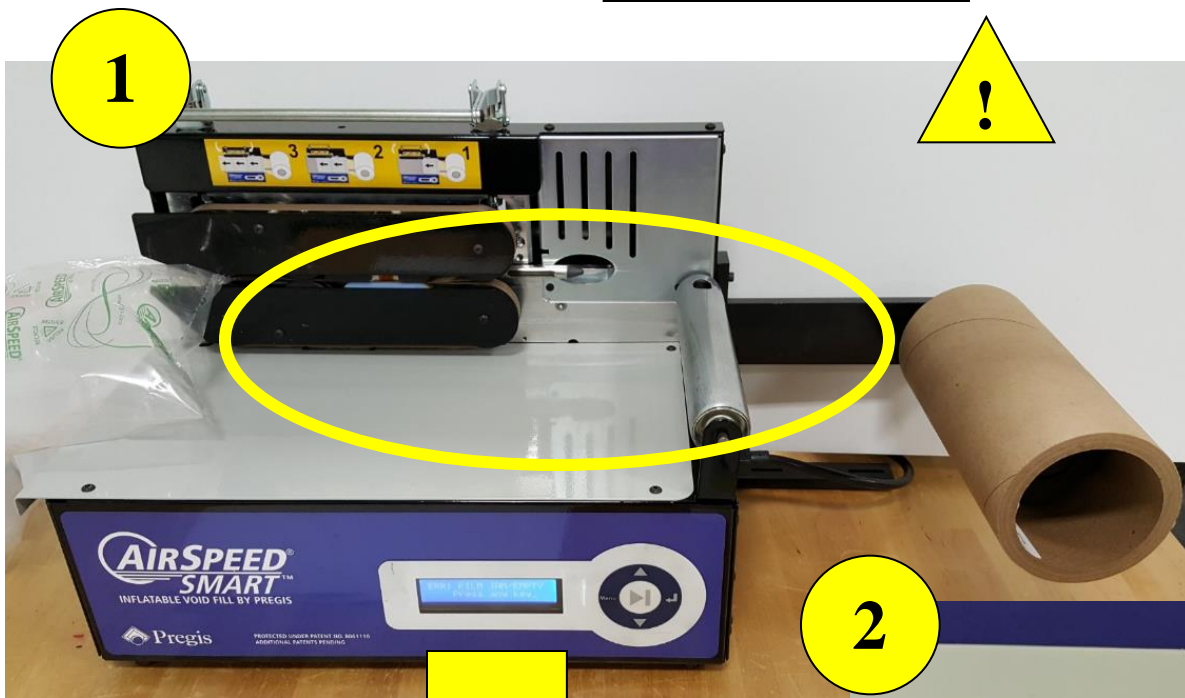


2. Press Increase or Decrease.



AirSpeed™ SMART Error Messages

Film Jam/Empty



2

ERR: FILM JAM/EMPTY
Press any key_

1. Out of Film or Jam.

2. Error Message.

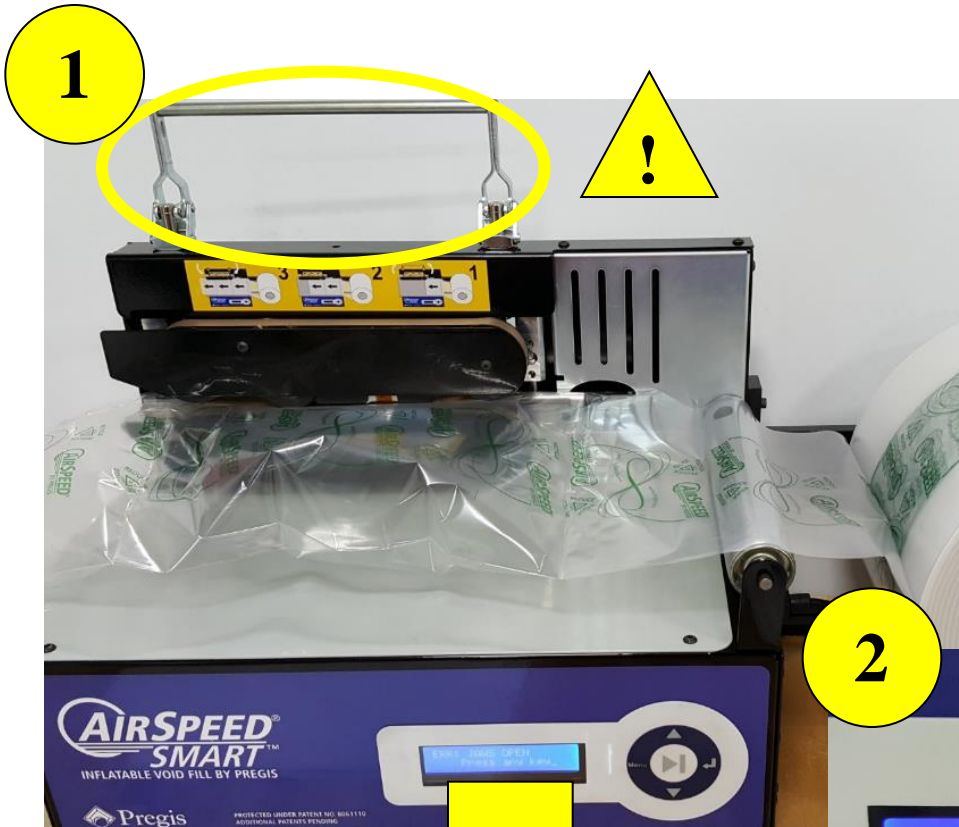
3



3. Load Spindle or Rethread.

AirSpeed™ SMART Error Messages

Jaws Open



1. Handle Raised.

2

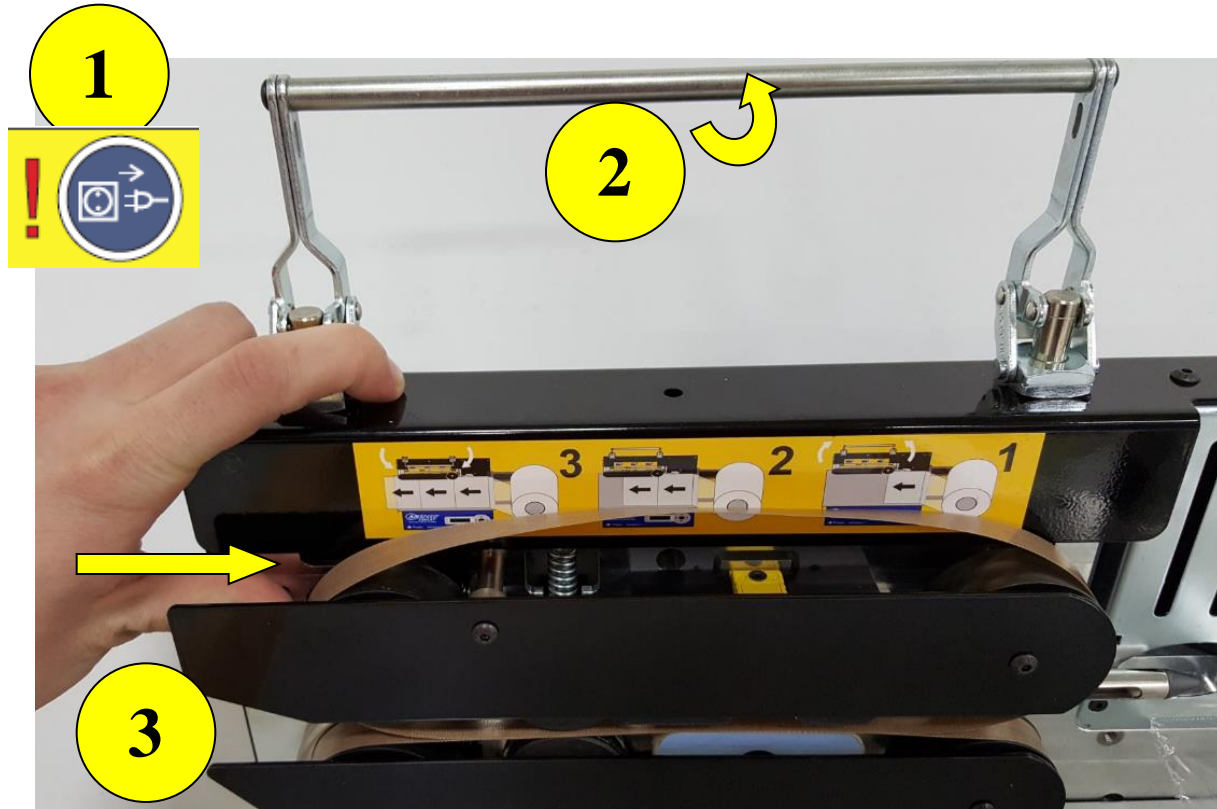


2. Error Message.



1. Lower Handle.

Replacing Seal Belts



1. Unplug Machine.

2. Raise Handle.

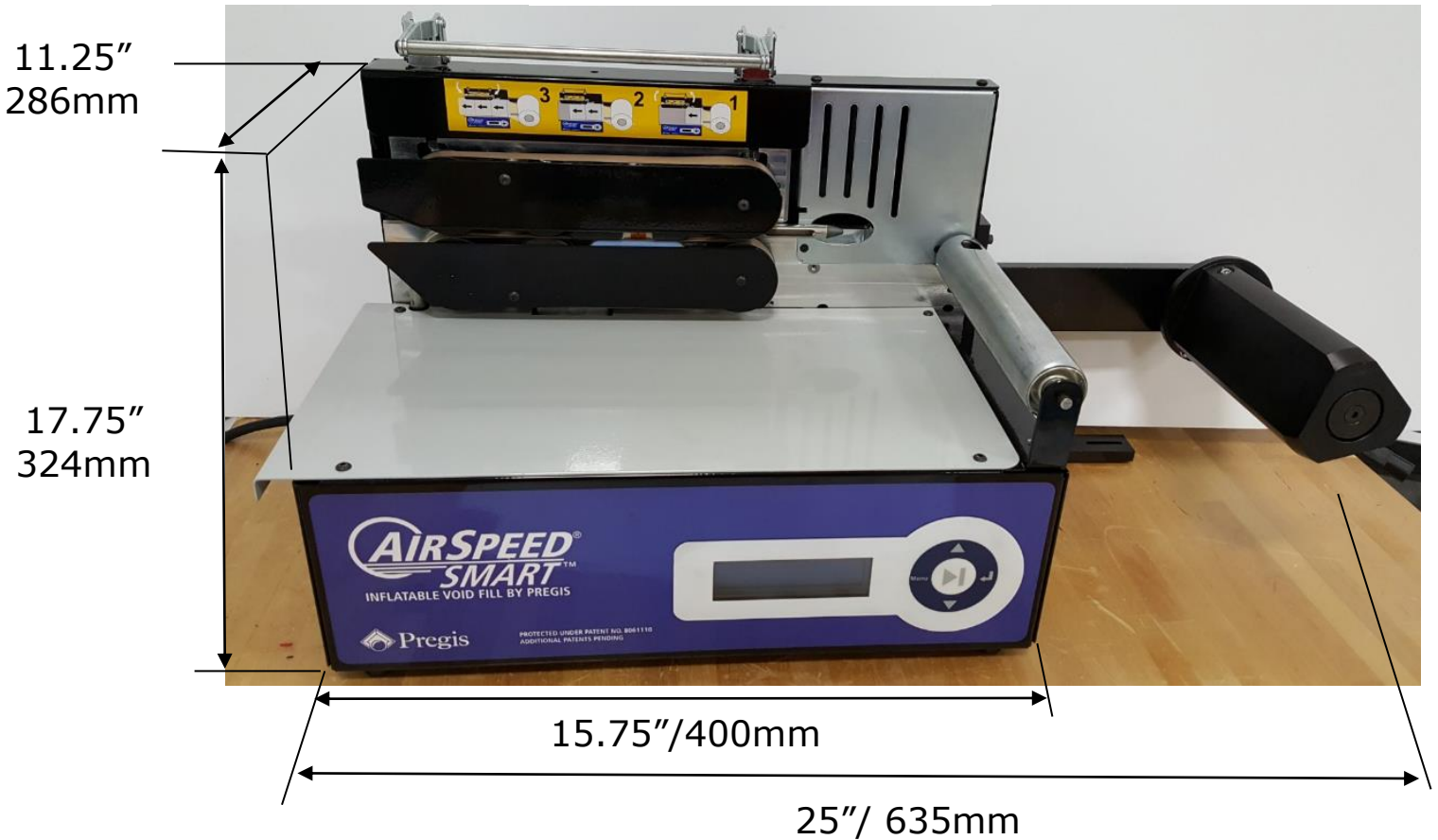
3. Press Front Wheel to Remove Top Belt.



4. Press Front Wheel to Remove Bottom

5. Reverse Process with New Belts.

Specifications



Weight (Machine): 30 lbs (13.64kg)

Size: 22" x 12.75" x 14"

Supply: 115/230V AC 50-60Hz

Amps: 2.0 A (110V) – 1.0 A (230V)

Noise Level: 60 dba @ 1 meter

Production Speed: 30 feet per min / 9.14 meters per min

Notes